



# Catalogue

## Aluminum Products



Since 2019



# OUR SERVICE

*notre produit*

PATIO COVER



*auvents*

SUNROOMS



*vérandas*

SLIDING GATES



*portes*

GLASS RAILINGS



*garde-corps*

FENCES



*clôtures*

WINDOWS & DOORS



*des portes*



## Company Overview

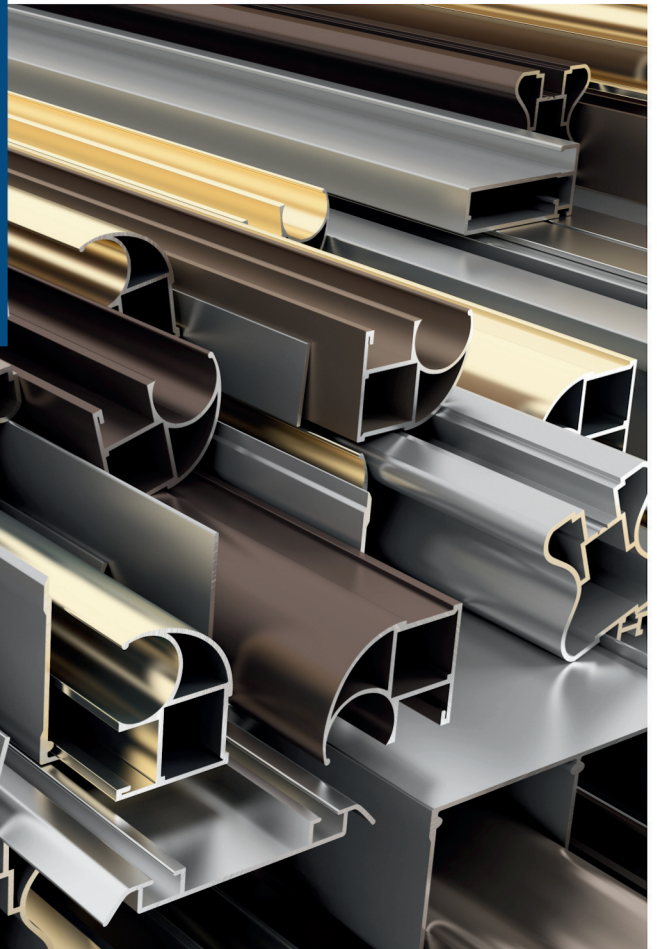
Founded in 2019, Hien Khai has emerged as a dynamic player in the aluminum industry, specializing in the design and manufacturing of top-quality aluminum extrusions, awnings, railings, windows, and doors. Headquartered in the picturesque province of British Columbia, Hien Khai is committed to shaping spaces and inspiring visions through its innovative products and services.

Hien Khai is not merely a manufacturer; it's a visionary partner in transforming spaces. With a mission to shape environments and inspire visions, our commitment to quality, innovation, and customer satisfaction propels us forward in the dynamic world of aluminum solutions.



## Coating Technology

At Hien Khai, our dedication to delivering superior aluminum products extends to the selection of materials and coatings that adorn our creations. Central to our commitment to excellence is the strategic use of PPG paints and coatings, renowned for their industry-leading quality, durability, and innovative formulations.



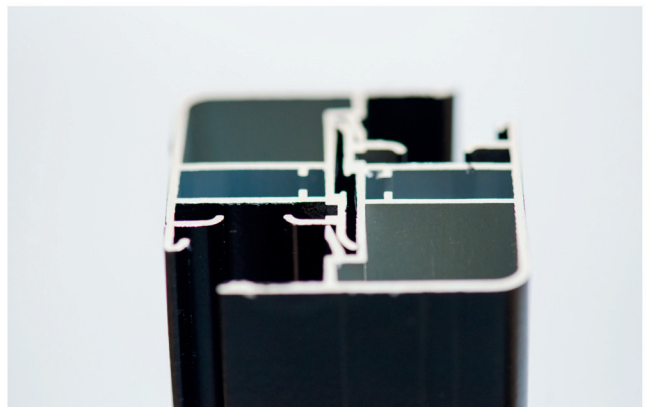
## Powder Coating

Hien Khai's powder coating technology opens up a world of possibilities when it comes to color customization. Our extensive color palette allows clients to choose from a spectrum of hues, enabling them to harmonize our products with the unique aesthetics of their spaces. The vibrancy and richness of our coatings withstand the test of time, resisting fading and wear.



## Anodizing

Our anodizing process is a precision-driven technique designed to capitalize on the intrinsic strength of aluminum. Through controlled oxidation, we create a protective layer on the surface of our aluminum extrusions, amplifying their resistance to corrosion, wear, and environmental elements.



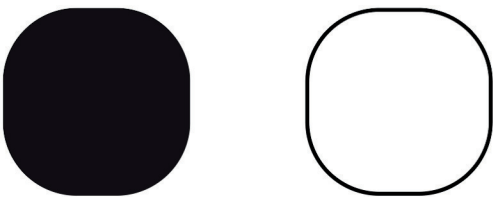
## ***Gutters & Downspout***

Our premium quality standard not only focuses on the aluminum production, but we also extend our niche requirements on the best quality accessories to assemble a perfect build for each project. That why we uses Kaycan, the most well-known brand for premium quality gutters and piping accessories, ensuring a seamless water drainage system for solariums and awnings build.

### ***KAYCAN***

Kaycan is a leading provider of exterior building products, specializing in innovative solutions for residential and commercial construction. Established with a commitment to quality and craftsmanship, Kaycan has been a trusted name in the industry for several decades.

#### ***Standard Colors***



# Premium Screws

Premium materials in combination with premium quality accessories contributes to a perfect build. That why Hien Khai manufacture its own screws, ensuring the long last-lasting lifespan of each screws could withstand and bear up to stress and weight-load. Streightening the build and it safety at the same time without compromising on price, as our screws are 5x times less expensive than local retailers.



**LONG-LAST**



**QUALITY**



**DURABLE**



## TEK Self Tappers

TEK Hex Self-Tappers Screws are the most reputable screws types in terms of metal screws. They are sharp with high-heat resistant which benefit for multiple drilling attempts and increase the flow of drilling, making it easy and smooth to drill into both steel and aluminum alloy. Its protective corrosion plating helps to resist rust and corrosion over long period of uses, ensuring the durability of each project would holds up to the test of time.

### Basic Nominal

- 5/8 & 2"

### Body Diameter

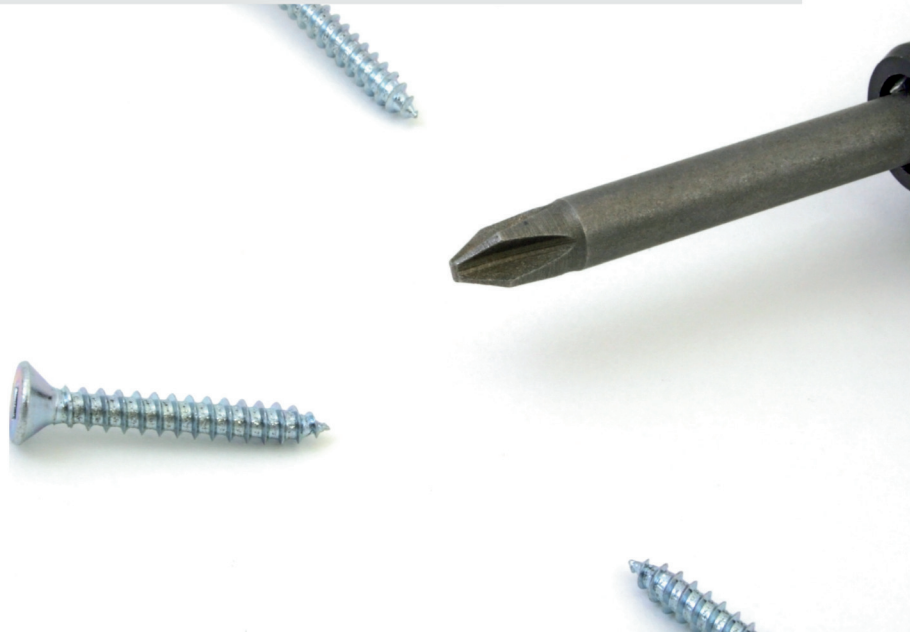
- 0.625 & 1.5000

### Grade Level

- Grade 5 & 8

### Stress Level

- 105,000 PSI
- 120,000 PSI







*Patio Cover  
& Awnings*

## HK VISION TEMPER GLASS AWNING

Enjoy the beautiful sunshine throughout four season in Vancouver with the HK VISION Glass system, designed for durability and visibility. Structure can hold up maximum of 1000 lbs of snowload

### FEATURES & BENEFITS



Minimalistic and clean design, elevating your patio to another level of usability



Enjoy no obstructed view or blocked sunlight with close to 2ft wide of glass panels



Natural sunlights contributes to sustainability, balancing the temperature of your patio



Crafted from T6-6061 aluminum alloy, the structure is strongly built and handle up to 40km/h of wind speed

### DESIGNS



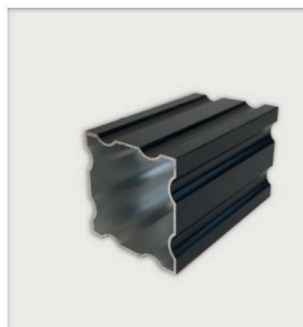
ON TOP OF ROOF

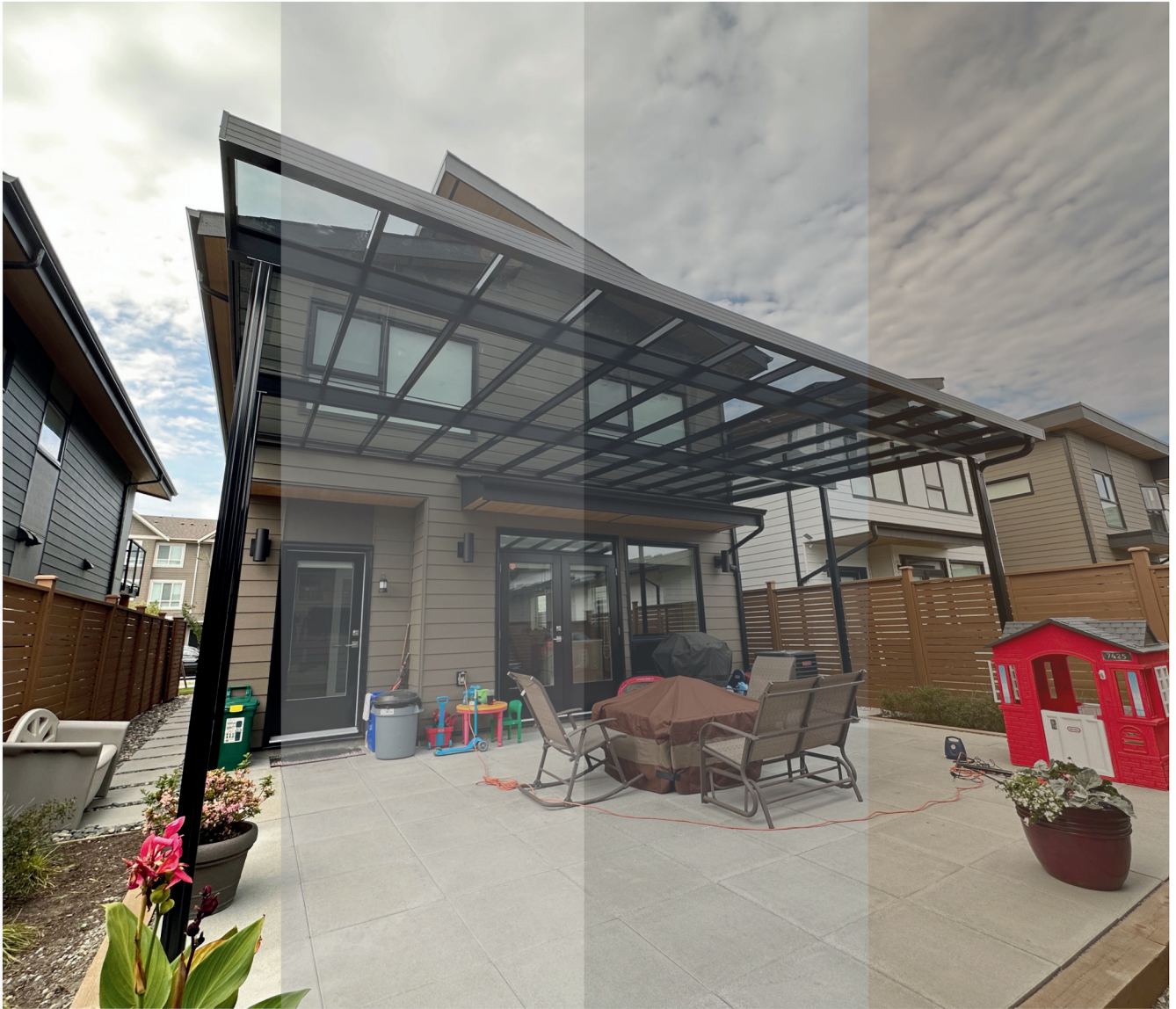


WOOD PERGOLA



STANDARD





## GLASS COLORS AND SPECS

Colours		Clear	Grey	Bronze
Heat Protections	UV A	0%	60%	55%
Heat Protections	UV B	0%	60%	55%
Heat Protections	UV C	0%	0%	0%
Size	Thickness	5mm	5mm	5mm
Size	Width	23.85"	23.85"	23.85"
Size	Length	1 - 12ft	1 - 12ft	1 - 12ft

# HK VISION V-PANELS SYSTEMS

Our most durable and sustainable roofing system, gives you full protection from harmful UV rays and blinds out debris from the surroundings. Our system is easy to maintain and last up to 15 years on one build

## FEATURES & BENEFITS



Easy design and flexibility for customization and can be cut to match the shape of the landscape



Enjoy no UV rays or visibility of debris from surrounding, suitable for carports build



Highly sustainable system and affordable at the same time, easy install makes it suitable for custom DIY job



Crafted from T6-6061 aluminum alloy, the structure is strongly built and handle up to 50km/h of wind speed

## DESIGNS



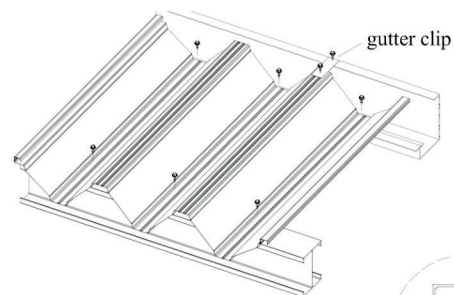
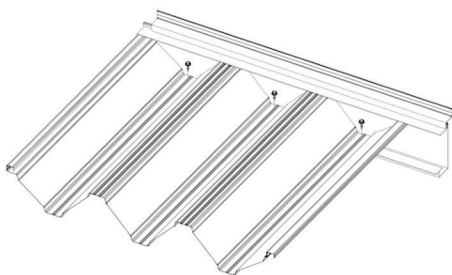
FREESTANDING



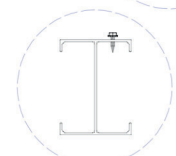
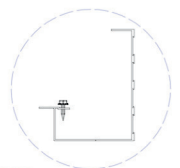
CARPORTS



SKYLIGHTS



gutter clip









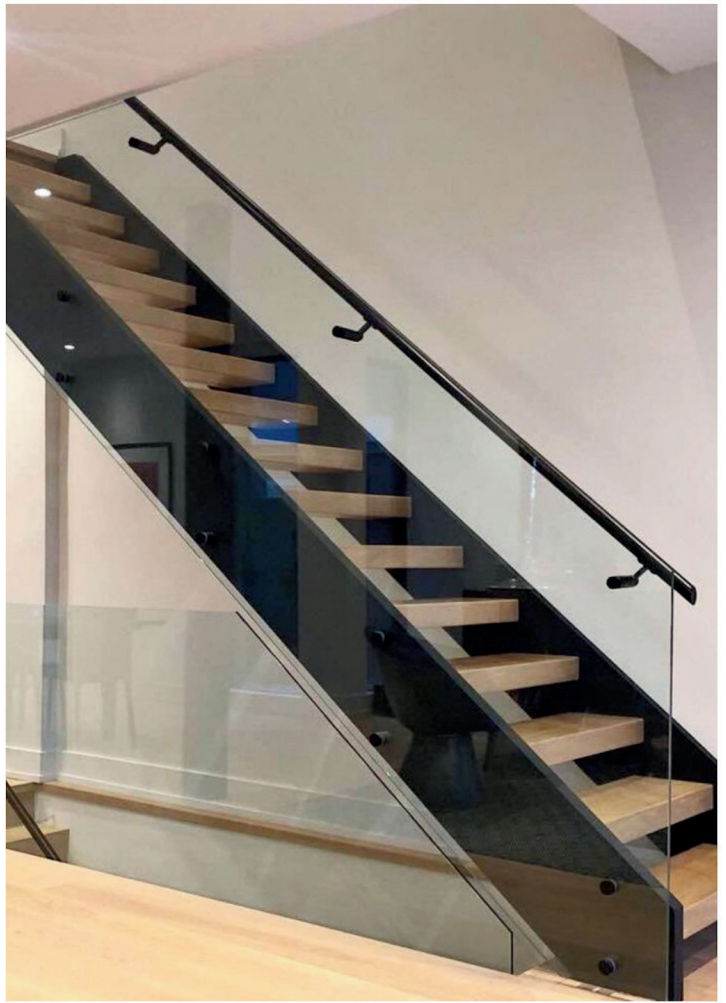


*Fences  
& Railings*



## GLASS BALUSTRADE RAILING SYSTEMS

OUR 12MM GLASS BALUSTRADE SYSTEM IS THE PERFECT DESIGN FOR MODERN HOMES CONVERTING YOUR EMPTY STAIRCASES INTO A MODERNISTIC AND STYLISH STAIRCASE. U-CHANNEL OR STANDOFFS OPTION AVAILABLE





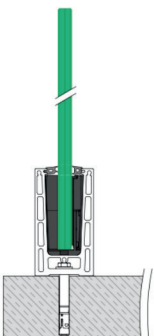
## HK U-CHANNEL BALUSTRADE SYSTEM

- Advanced U-Channel Stainless Steel Rail System designed specifically for 10mm and 12mm tempered glass.
- 
- The minimalist base shoe is just 1.77" wide, make it light and easy to handle

### HEAVY DUTY STAINLESS STEEL TOPRAIL

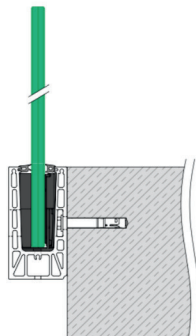


**Prime**  
Top mount



**Prime**  
Fascia mount

- Optional base shoe cladding





## STANDOFF & CLIPS SYSTEM

Crafted from heavy duty non-rust stainless steel, our balustrade accessories can withstand heavy stress load and heavy weighted glass panels up to 150lbs per piece. Ensuring the stability of the railings.

### FEATURES & BENEFITS



Easy install and access for DIY contractors and installers.



Enjoy rust and corrosion free with our stainless steel alloy



Highly sustainable system and affordable at the same time, easy install makes it suitable for custom DIY job



Crafted from heavy duty stainless steel, the structure is strongly built and handle up to 150lbs per piece of weight load.

### ACCESSORIES



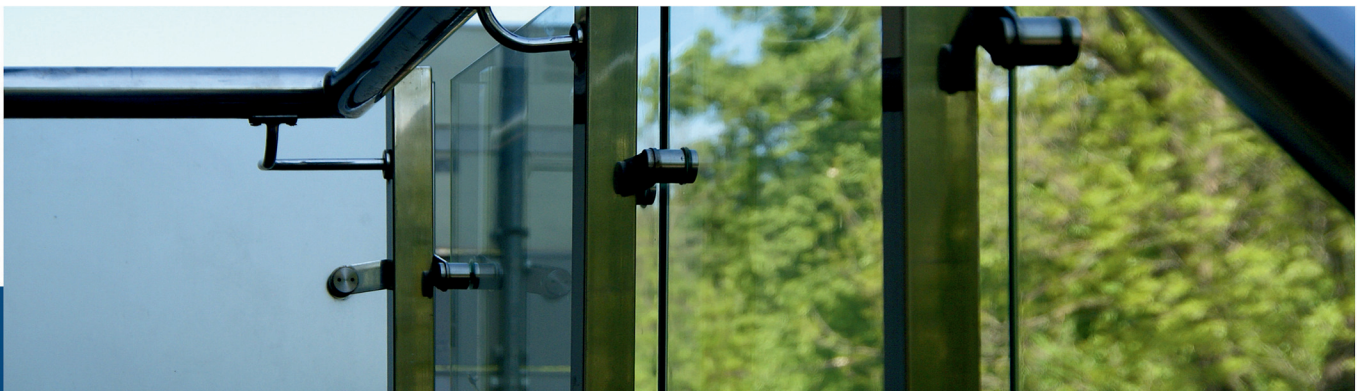
STANDOFFS



CLIPS

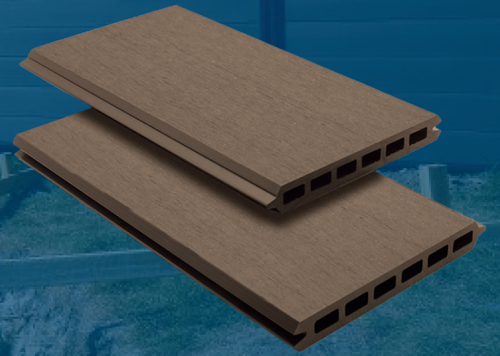
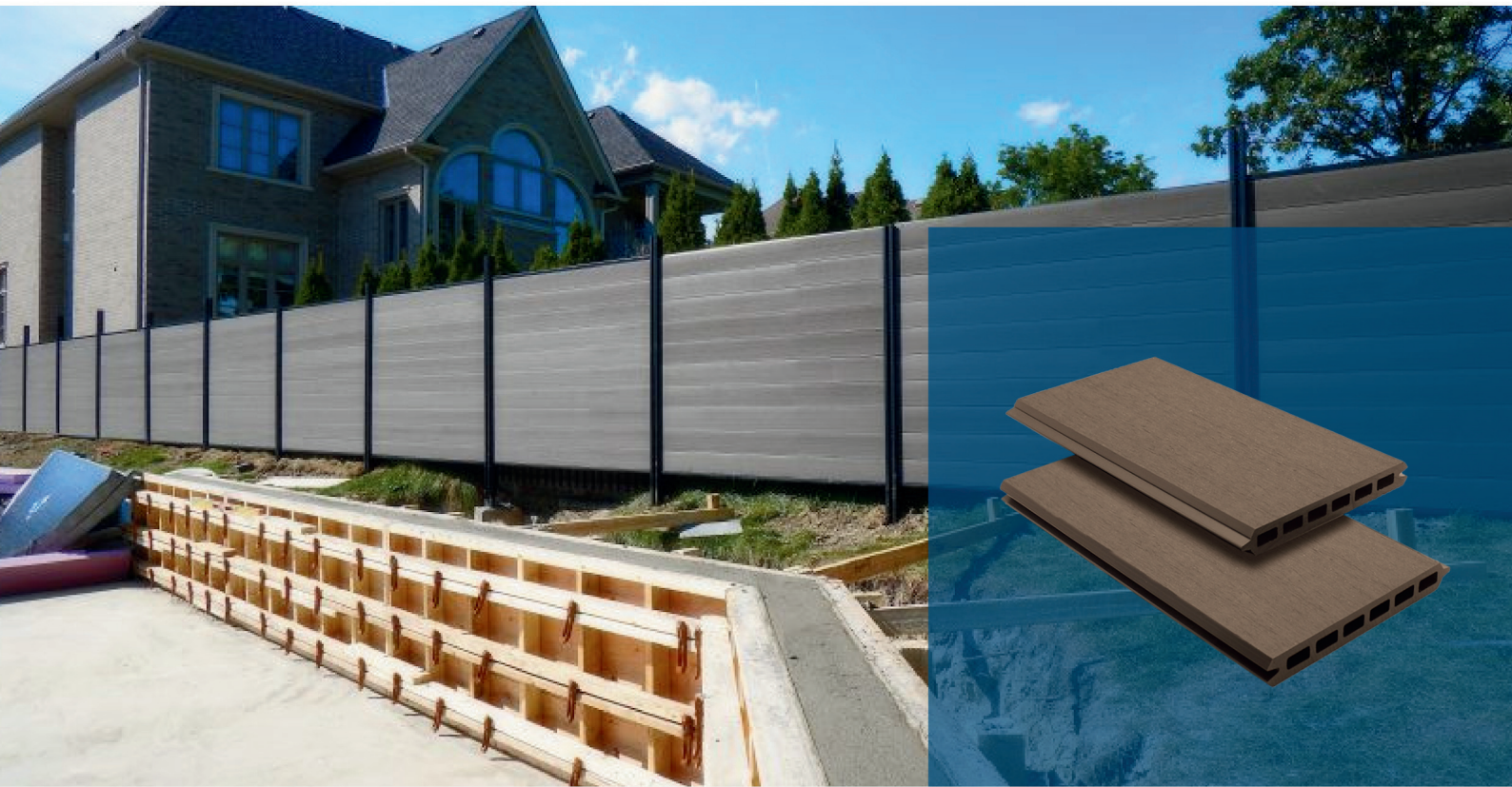


HANDRAILS





*Fences*



## WPC COMPOSITE FENCES

Enjoy the beautiful surrounding of your house with our composite fencing system, designed to last and aesthetic look. With two corrugated aluminum posts system cementing into the ground, gives you maximum stability and strength to withstand the test of harsh weather conditions. The composite fences panels are customizable with different wood color , creating different theme for your home.





*Sunrooms  
& Skylights*



• INSULATION



• 4 STARS ENERGY



• DURABLE



## HK VISION SUNROOMS SYSTEM

Enjoy a useable space throughout 4 season in local Canadian weather is a dream come true credited to our advance windows and doors insulation system crafted and assemble from aluminum alloy. With a vast selection of design and custom fabrication, we make sure each project will look exceptional matching the style and texture of your house.

### DESIGN BENEFITS

Building and investing in a sunroom for your home is a wise decision as it adds additional values to your home area, expanding the usable space and square footage of your house.



### ADVANCED SYSTEM

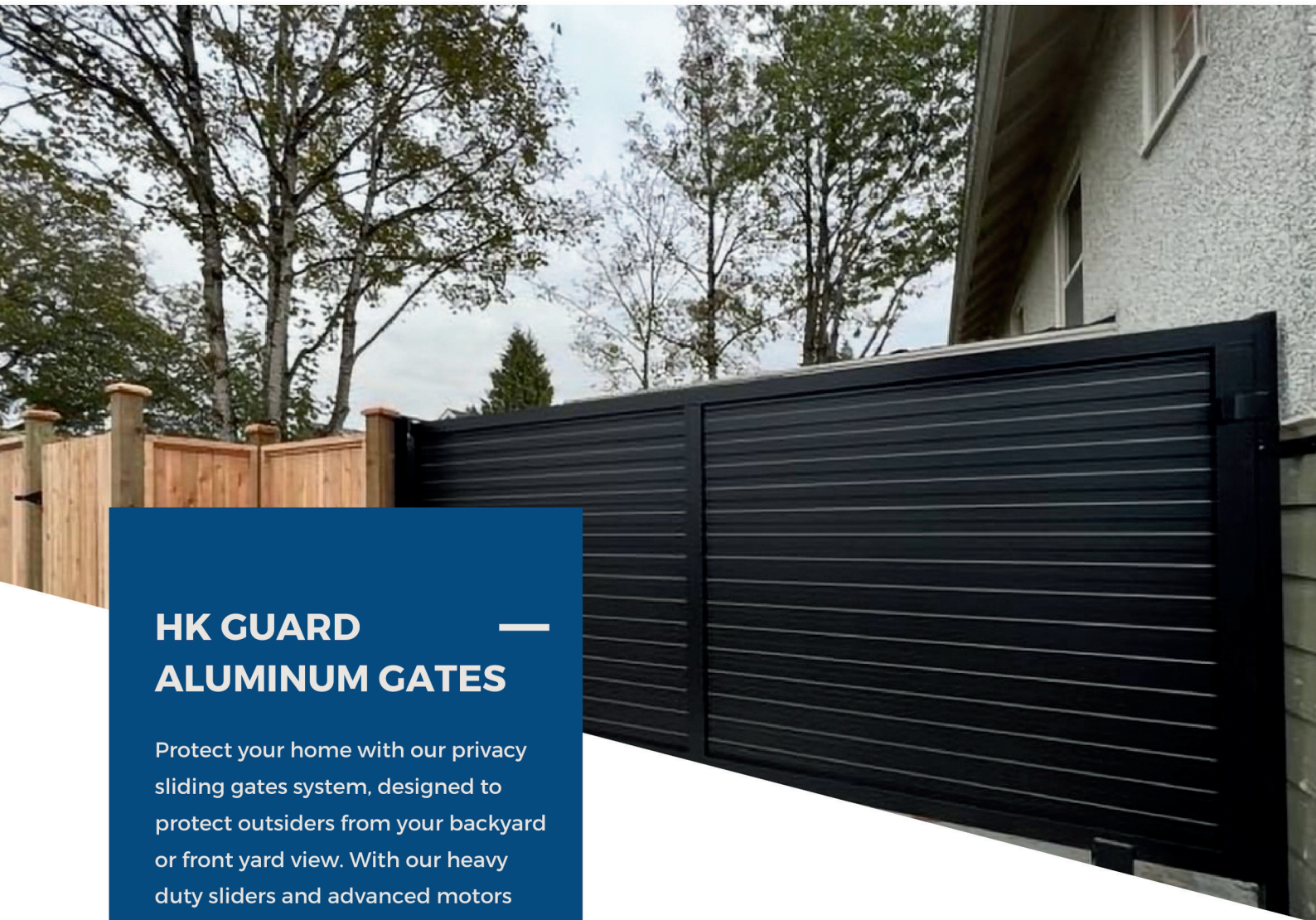
---







*Gates  
& Automation*



## HK GUARD ALUMINUM GATES

Protect your home with our privacy sliding gates system, designed to protect outsiders from your backyard or front yard view. With our heavy duty sliders and advanced motors system, we ensure the gates withstand the test of time

### SLIDING GATES

SUITABLE FOR MOST VANCOUVER'S HOME WITH CONCRETE TRACKS AND SOLID FOUNDATIONS. PERFECT FOR MANSIONS

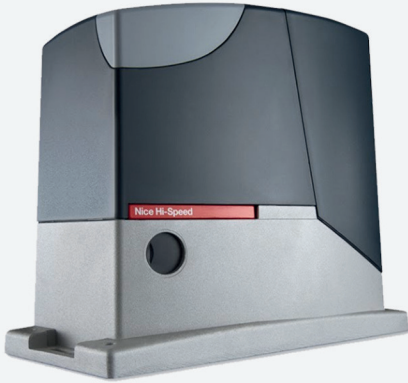


### SWING GATES

SUITABLE FOR AREA WITH LESS SLIDING SPACES, DURABLE AND STRONG WITH NO NEED FOR SOLID FOUNDATION OR CONCRETE TRACK



## NICE ROBUS 500 HI-SPEED MOTORS



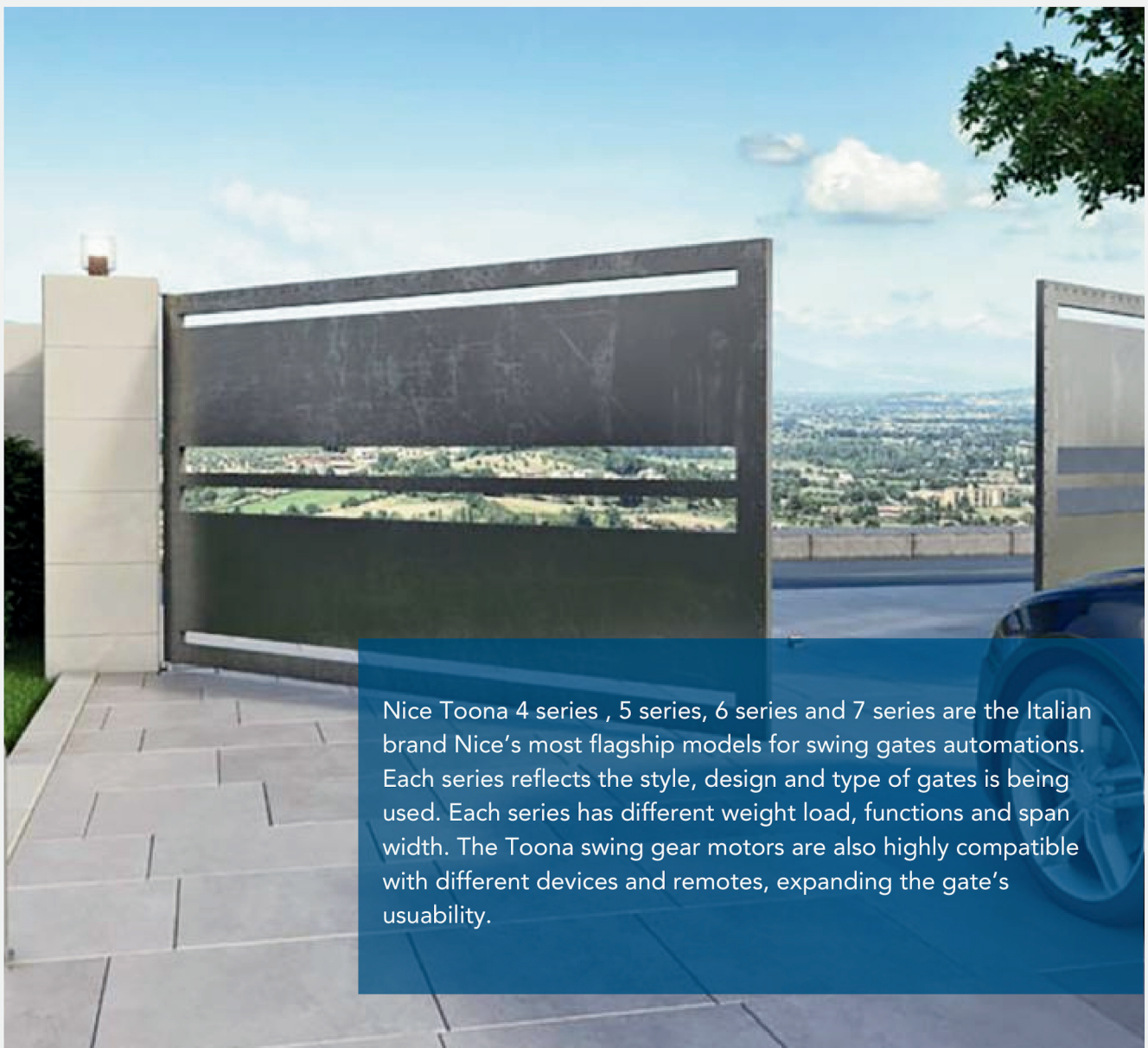
Performance Speed	0.43 m/s
Maximum Load	500kg/ 1100lbs
Working Temps	-20 degrees to +50
Water protections	IP44 rated



Nice Robus 500 Hi-Speed Motors is from an Italian automation brand Nice. Nice have a long history in motors automations, developing and manufacture the best and most durable motors system designed for gates and garage doors. Nice motors satisfied our requirements and needs for a quiet and smooth running gate. The Nice Robus 500 is highly programmable and can be paired up with different remotes and accessories. All motors come with 2 remotes.

## NICE TOONA 4 ELECTRO GEAR MOTORS

Performance Speed	0.012 m/s - 0.016
Maximum Load	500kg/ 1100lbs
Swing Span	7 meters
Maximum Force	1800 NM



## Contact info

Phone Number: 236-335-0927

Home Office: 9055 Dayton Avenue, Richmond , BC

Warehouse: 11800 River Road, Richmond, BC - Unit 136

Website: [www.hienkhaicanada.com](http://www.hienkhaicanada.com)

